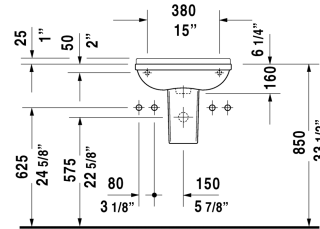
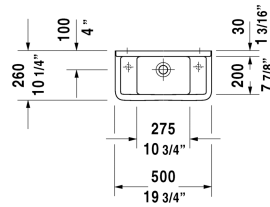


Starck 3 Handrinse basin # 0751500000 / 0751500008 / 0751500009

| < 19 5/8" Inch > |



Handrinse basin	Dimension	Weight	Order number
with overflow, with faucet deck, underside fully glazed, hardware included, wall-mounted, cUPC® listed*, 19 5/8" Inch			
Colors			
00 White			
Variant			
● ● pre-marked faucet hole on left and right side	19 5/8" x 10 1/4" Inch	17.6 lb	0751500000
● faucet hole on right side	19 5/8" x 10 1/4" Inch	17.6 lb	0751500008
● faucet hole on left side	19 5/8" x 10 1/4" Inch	17.6 lb	0751500009
Infobox			
* Complies with following standards: ASME A112.19.2/CSA B45.1, In combination with siphon cover, a pop-up drain can not be used			
Sanitary ceramics with the special WonderGliss surface finish will remain clean and attractive-looking for a long time to come. When ordering WonderGliss please add a "1" as eleventh digit to the model number.			
Push button drain assembly for washbasins with overflow	2" Inch	0.8 lb	005052
Suitable products			
Siphon cover for # 075150, 6 1/4" x 6 1/2" Inch	6 1/4" x 6 1/2" Inch		086518

All drawings contain the necessary measurements which are subject to standard tolerances. They are stated in inch & mm and are non-binding. Exact measurements, in particular for customized installation scenarios, can only be taken from the finished ceramic piece.